

PART S.E. 1/4 SEC. 23, T.5N., R.2W., S.L.B. & M.

# ROYSET PARK ADDITION

IN ROY CITY

SCALE 1" = 50'

TAXING UNIT: 41

SEE PAGE 132

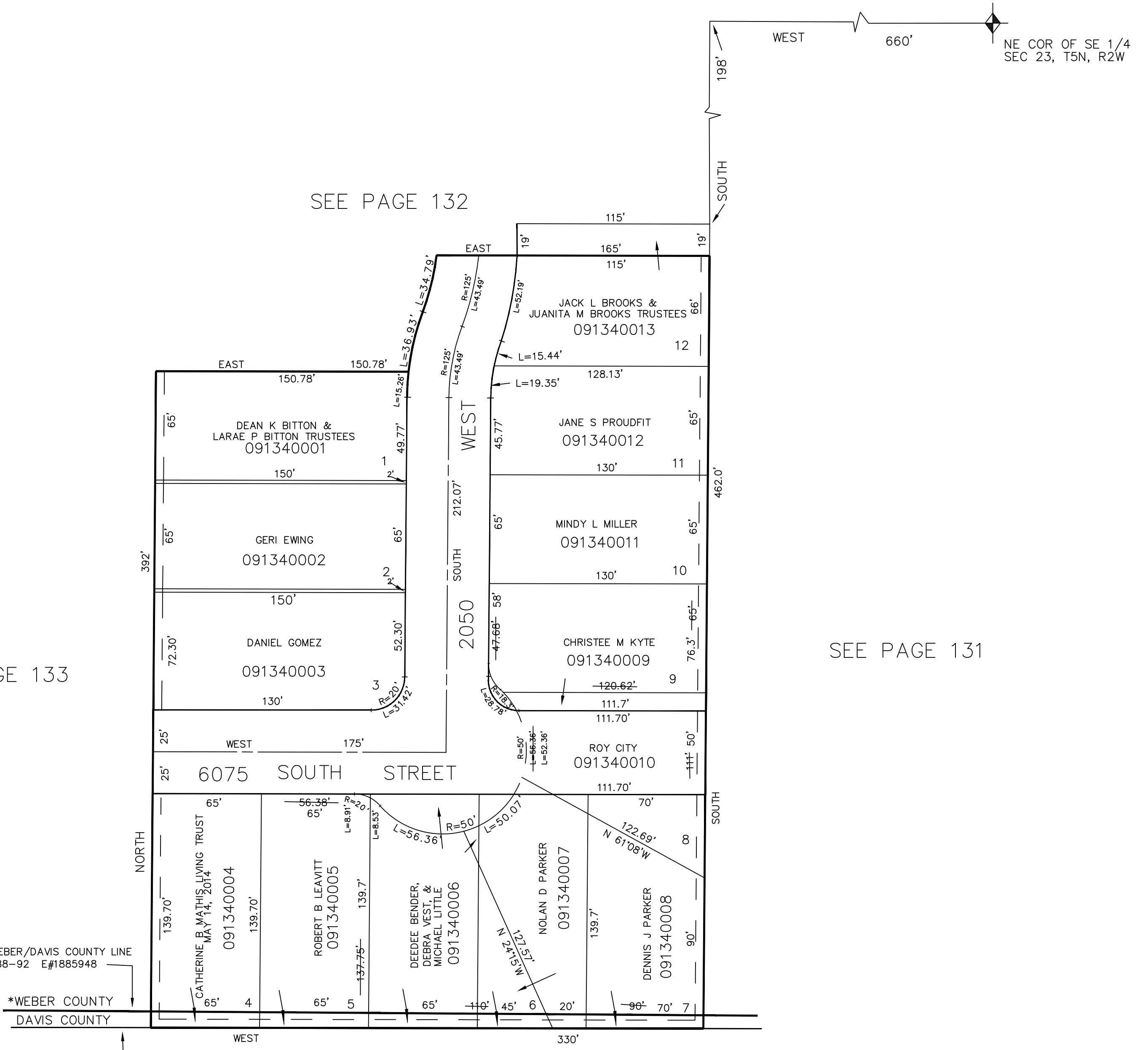
SEE PAGE 133

SEE PAGE 131

\*RETRACED WEBER/DAVIS COUNTY LINE  
BK 56 PGS 88-92 E#1885948

\*WEBER COUNTY  
DAVIS COUNTY

SOUTH LINE OF SUBDIVISION



5' UTILITY & DRAINAGE EASEMENTS  
EACH SIDE OF PROPERTY LINES AS  
INDICATED BY DASHED LINES.  
EXCEPT AS OTHERWISE SHOWN.

FOR COMPLETE ENG. DATA SEE  
ORIGINAL DEDICATION PLAT IN  
BOOK 11, PAGE 22, OF RECORDS.